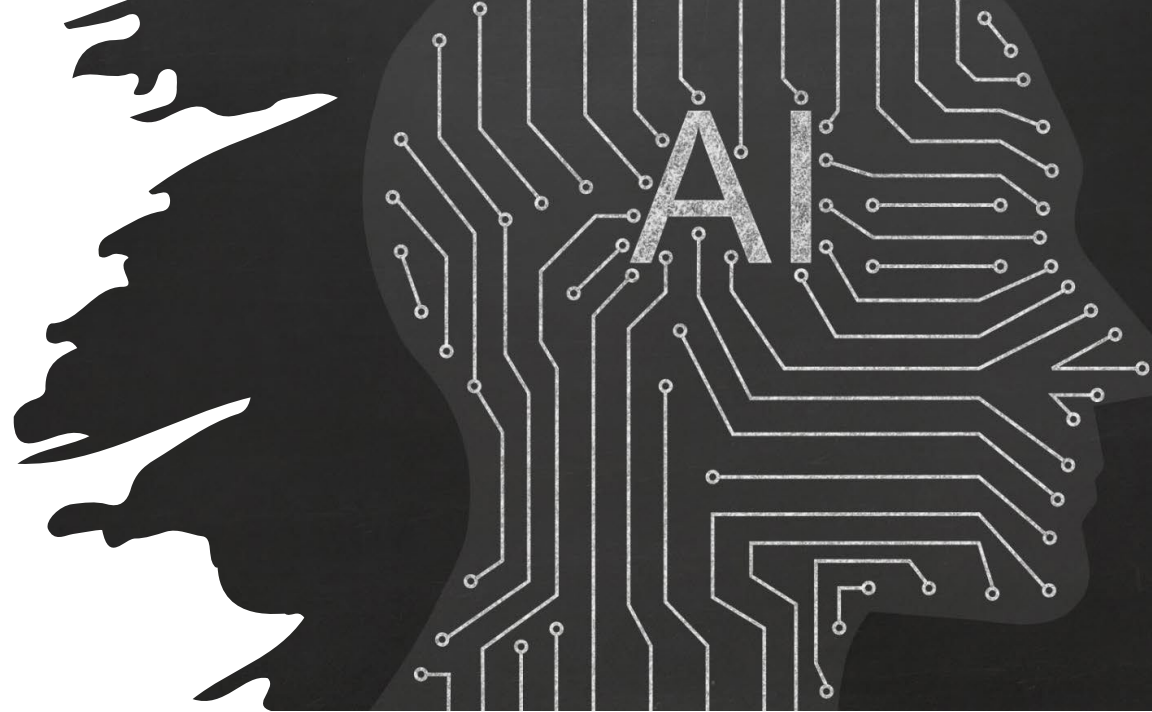


Harnessing the Power of AI to Elevate Effectiveness

Jay Stulo - Director of AI Strategy and Technology
at Fox Valley Technical College



Agenda

- AI and its Impact
- Generative Models
- Improving Skills and Performance
- Ethical and Responsible Use of AI
- Customizing AI Models



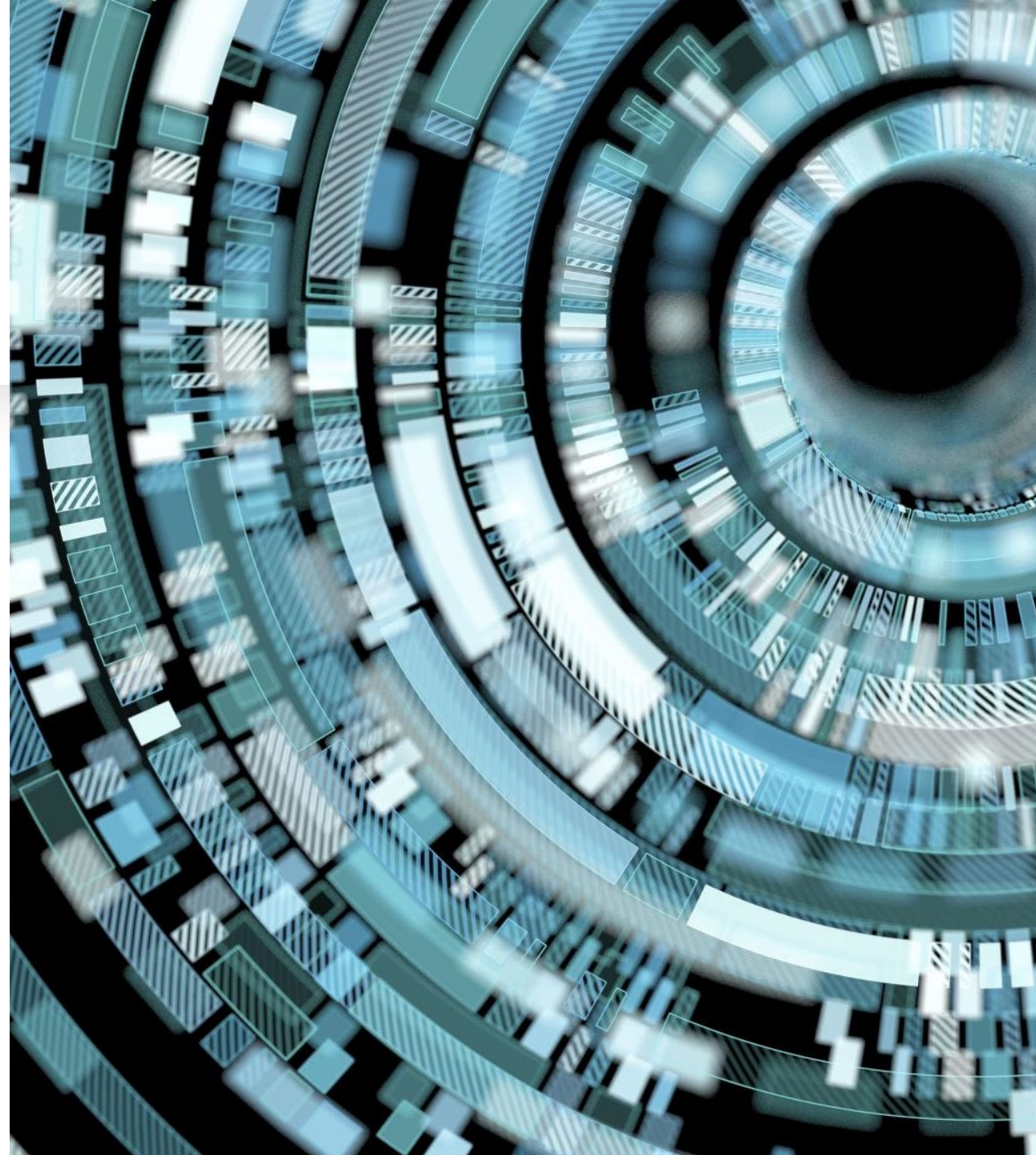


AI is Transformational

- AI will transform every aspect of our lives
 - From healthcare to education
 - From business to entertainment
- Super Powers
- AI can help us achieve more with less
- Can be used as a tool for personal and professional growth

Large Language Models

- OpenAI - ChatGPT
- Google - Gemini
- Anthropic - Claude
- Microsoft - Copilot
- X (twitter) - Grok
- Meta (facebook) - Llama
- Amazon - Q



Generative Models

- What are LLM generative models and how they work
- Critical Knowledge
 - Data Privacy
 - Confabulation
 - Copyright Liability
- How generative AI works
 - Embeddings
 - Vectors
 - Semantic search
- Ensuring the ethical use of Gen AI and LLMs





Improving Skills and Performance

AI can help improve skills, knowledge, and performance

How AI can enhance your creativity and innovation

- AI can help generate new ideas and inspire creativity
- AI can assist in design and art
- AI can aid in problem-solving and decision-making
- AI can help with content creation and storytelling
- AI can assist with language translation and cultural understanding



Boosting Confidence and Motivation with AI

- AI can assist with time management, prioritizing tasks and optimizing workloads.
- AI can provide personalized feedback, highlighting strengths and areas for improvement, for greater self-awareness and growth.
- AI can provide instant results and feedback, enabling faster learning and decision-making.



Customizing AI Models

- Prompt Engineering
 - Designing prompts to guide the model's response
- Customization
 - Adding personality, skillsets, and knowledge bases to the model



Agent Chaining with Custom Models

- Agent Chaining enables multiple virtual assistants to work on a single task
- Agent Chaining allows for more complex tasks to be completed
- Custom models can be implemented to enhance the capabilities of virtual assistants

